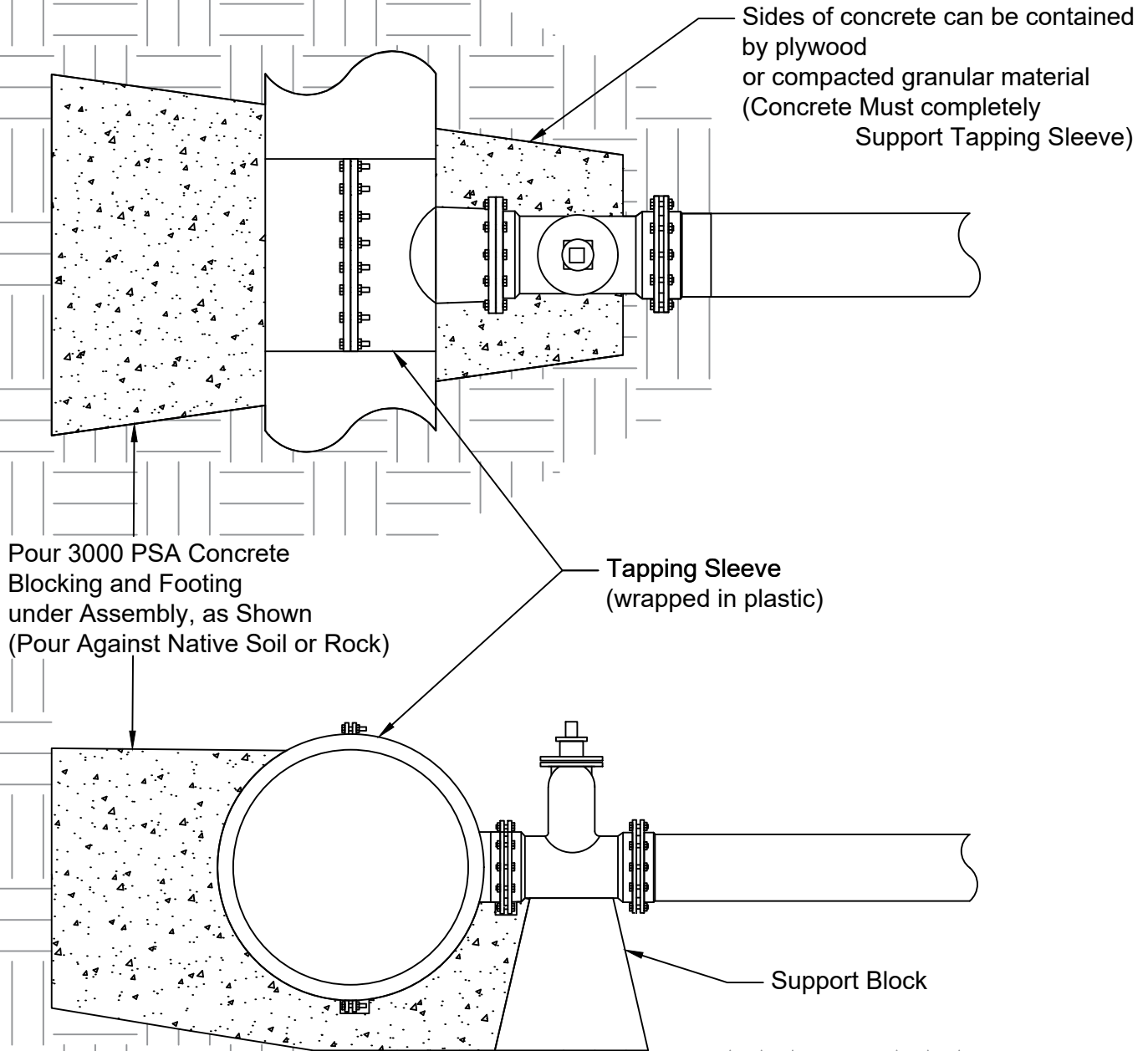


AVION WATER CO

SUPPORT BLOCKING

Large Hot Taps, 4" and Larger



NOTES:

1. The bottom and back side of Tapping Saddle shall have a minimum of 1ft clearance from native material.
2. The Tapping Sleeve shall be a minimum of 2ft from the nearest Pipe Joint. (Bell or Fitting)
3. 3000 psi concrete shall be used as the support block, and poured to native soil or rock under the pipe and Tapping Saddle.
The Concrete Block must completely support the full surface area of the Tapping Saddle. The sides may be contained by plywood or compacted soil.
4. Tapping Sleeve and Gate Valve **MUST** be wrapped in Plastic.

DWN BY: TEL
 DATE: April 2024

Avion design specifications do not relieve the developer, engineer, or contractor from responsibility to design and construct the water system in accordance with good engineering and construction practices. Must adhere to OAR 333-061-0050 Construction Standards.

AVION WATER CO

60813 PARRELL RD BEND, OR 97702

SUPPORT BLOCKING

Large Hot Taps, 4" and Larger

NOT TO SCALE	
REV/DATE	
REV/DATE	
REV/DATE	